

HOT WATER – WHY COMPROMISE

Professional hot water pressure washers



**Nilfisk
ALTO**

Why Compromise

Flow activation

- Increased comfort and reliability



The unique flow activated unloader technology

The flow activated unloader technology is based on the traditional KEW systems – proven for more than 35 years. The start and stop impulses for the motor are created by the movement of water – and not by a drop or increase in pressure in the pump. In 2009, Nilfisk-ALTO launches the unique flow activated control system on the lines NEPTUNE 4, 5 and 7.

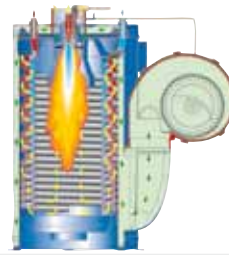
This unique system offers several advantages, especially user comfort and safety as well when the machine runs in by-pass:

- Increased user comfort when machine is in standby mode: No residual pressure in the hose and gun when the unit is in by-pass. The hose is easier to move around. The absence of pressure in the hose also offers a higher level of security.
- Increased lifetime: Small water leaks in accessories or piping systems will cause the motor on pressure activated systems to start and stop – over time reducing lifetime, or even causing the breakdown of the machine. With the flow activated unloader, small leaks will reduce motor start-stops – and thus prolongs the lifetime of the machine.
- When activating the spray gun, the gradual increase in pressure reduces start recoil force and is more comfortable to use.
- Easily serviced system with good access to key components.
- Low pressure on the pump head.

In our hot water range, in association with the water break tank and the new backflow preventer system, the NEPTUNE 4, 5 & 7 FA lines is in full compliance with EN 1717 and EN 60335-2-79.

Pump and boiler units

- Durability, reliability and unique control systems



NA5 pump

The pump innovation from Nilfisk-ALTO has focused on providing superior cleaning power and even higher durability. With the NEPTUNE 4 FA and 5 FA, you can get your cleaning task done quicker and prolong the working life of your pressure washer, reducing your overall cleaning costs.

The NA5 wobble disc pump unit is not only robust and cost effective – it is also quiet, making cleaning more comfortable.

No compromise has been made on quality materials and lifetime.

- Ceramic piston sleeves offer high resistance to wear and tear
- Brass pump head offers longer lifetime
- 1450 RPM slow running motor continues to power the pump, offering a major reduction in sound level and unbeatable durability.

C3 PUMP

Our premium class NEPTUNE 7 FA is equipped with the renowned C3 motor pump unit. Unbeatable Longevity and robustness are the main characteristics of the heart of our NEPTUNE 7 FA line.

- 4 pistons for additional sharing of the load
- Ceramic pistons for high resistance to wear and tear
- Oscillating wobble disc with reinforced bearings reduces friction on piston heads
- 1450 rpm slow running motor

EcoBoiler and ease of maintenance

The EcoPower boiler, first boiler with low running costs on the market in 2003 offers a high efficiency level, meaning that less of the money spent on fuel goes to waste as just hot air. Savings sometimes up to 16 % in fuel costs.

The EcoPower boiler is powered by the DuoMotor system which avoid functional problems due to inversion of electrical phases.

Not only does the clean combustion ensure that the boiler stays cleaner and efficient for longer, but the removal of the coil can be done in record time thanks to the optimal positioning of connections.

The EcoPower boiler is automatically running at its most economical level at temperature settings of around 60°C on the thermostat, providing an ideal combination of hot water and low costs. But even at higher temperature settings, the boiler offers efficient and low cost heating. For heavy degreasing tasks requiring higher temperature levels, the EcoPower boiler still offers lower running costs than many other products.



NEPTUNE 1 & 2

- An evolution in hot water cleaning



NEPTUNE 1-22

- Low fuel cut off.
- Mobile vertical design.
- 2800 RPM motor.
- Stainless steel pistons.
- Pressure activated unloader.
- Low running and maintenance costs.
- Flame sensor.
- Low pressure detergent.
- Duo motor system.
- Exhaust gas sensor.
- Two lance holders.
- Unbeatable ergonomics.
- Low storage space and footprint.
- Manoeuvrable design.
- Ergo 2000 gun with hose swivel.

NEPTUNE 2

- Mobile vertical design.
- 2800 RPM motor.
- Ceramic pistons.
- Brass cylinder head.
- Pressure activated unloader.
- Removable detergent tank.
- Low running and maintenance costs.
- Low fuel cut off.
- Flame sensor.
- Exhaust gas sensor.
- Two lance holders.
- Unbeatable ergonomics.
- Low storage space and footprint.
- Excellent cleaning performance.
- High pressure detergent.
- Ergo 2000 gun with hose swivel.



The vertical design on both NEPTUNE 1 & 2 reduces machine footprint considerably, making storage and transport less of a problem, the ideally placed transport handle make the product easy to push and pull.

The NEPTUNE 1 & 2 will fit easily into the corner of a workshop, into a commercial vehicle. It can even be hung nicely onto a wall, well out of harm's way.

TECHNICAL DATA	NEPTUNE 1-22	NEPTUNE 2-26	NEPTUNE 2-26 X	NEPTUNE 2-33	NEPTUNE 2-33 X	NEPTUNE 2-41	NEPTUNE 2-41 X
Pump pressure (bar/MPa)	110/11	145/14.5	145/14.5	170/17	170/17	190/19	190/19
Cleaning impact (kg/force)	2.2	2.6	2.6	3.3	3.3	4.1	4.1
Water flow Q _{max} /Q _{IEC} (l/h)	600/540	600/530	600/530	690/630	690/630	780/730	780/730
Max. inlet temperature (°C)	40	40	40	40	40	40	40
Pistons/number of pistons	Stainless/3	Ceramic/3	Ceramic/3	Ceramic/3	Ceramic/3	Ceramic/3	Ceramic/3
Pump (RPM)	2800	2800	2800	2800	2800	2800	2800
Water temperature (water/steam) (°C)	80/	80/150	80/150	80/150	80/150	80/150	80/150
Fuel consumption, ΔT=45°C (kg/h)	2.6	2.6	2.6	3.1	3.1	3.5	3.5
Fuel tank (l)	17	17	17	17	17	17	17
Dimensions L x W x H (mm)	607 x 688 x 1000	607 x 688 x 1000	607 x 688 x 1071	607 x 688 x 1000	607 x 688 x 1071	607 x 688 x 1000	607 x 688 x 1071
Weight (kg)	91	97	99	97	99	97	99
Power consumption (kW)	2.8	3.4	3.4	4.1	4.1	5.1	5.1
Voltage/phase/frequency/current (V/~/Hz/A)	230/1/50/12	230/1/50/14.5	230/1/50/14.5	400/3/50/8	400/3/50/8	400/3/50/9	400/3/50/9
Detergent tank (l)	5	5	5	5	5	5	5
El cable (m)	5	5	5	5	5	5	5
Automatic start/stop	●	●	●	●	●	●	●
Nozzle size	0400	0340	0340	0370	0370	0400	0400
STANDARD EQUIPMENT							
HP Hose (DN6)	301002275 [10 m]	301002275 [10 m]	101117763 [15 m]	301002275 [10 m]	101117763 [15 m]	301002275 [10 m]	101117763 [15 m]
Ergo 2000 gun	106403122	106403122	106403122	106403122	106403122	106403122	106403122
Ergo coupling	101119496	101119496	101119496	101119496	101119496	101119496	101119496
Water inlet coupling*	32541	32541	32541	32541	32541	32541	32541
Hose reel			107145197		107145197		107145197
FlexoPower Plus lance without HP nozzle	106402281						
Universal Plus lance without HP nozzle		106403036	106403036	106403036	106403036	106403036	106403036
Tornado Plus nozzle	101119738	101119735	101119735	101119737	101119737	101119738	101119738
ITEM NO.	107145000	107145003	107145004	107145009	107145010	107145013	107145014

* Gardena coupling

NEPTUNE 4 FA

- Reliable and powerful hot water cleaning



NEPTUNE 4 FA

- EcoPower boiler with > 92% efficiency.
- Flow activated control system - Reduced running costs.
- 1450 RPM motor.
- NASH pump with ceramic pistons.
- Easy to use control panel.
- Ergo 2000 accessory concept.
- Reduced air pollution.
- QuickService concept reduces maintenance costs.
- Steel frame and chassis.
- Easy to move and transport.
- Hose reel and additional hose on -X models.



When transport or storage is important, but you need maximum cleaning power and long lifetime, then the NEPTUNE 4 FA is an optimal solution.

Everyday, tough cleaning tasks have never found a better solution. The NEPTUNE 4 FA line is ideal for users with everyday, tough cleaning tasks, whatever the customer group. Be it cleaning of vehicles, farming areas or equipment or within industrial environments, the NEPTUNE 4 FA will blast through the dirt. A combination of compact design, mid range power and lifetime...

TECHNICAL DATA	NEPTUNE 4-31 FAX	NEPTUNE 4-39 FAX	NEPTUNE 4-43 FAX	NEPTUNE 4-50 FA	NEPTUNE 4-50 FAX	NEPTUNE 4-55 FA	NEPTUNE 4-55 FAX
Pump pressure (bar/MPa)	110/11	165/16.5	180/18	190/19	190/19	200/20	200/20
Cleaning impact (kg/force)	3.1	3.9	4.3	5.0	5.0	5.5	5.5
Water flow Q _{max} /Q _{IEC} (l/h)	770/720	820/760	860/800	960/900	960/900	1050/960	1050/960
Max. inlet temperature (°C)	40	40	40	40	40	40	40
Pistons/number of pistons	Ceramic/3	Ceramic/3	Ceramic/3	Ceramic/3	Ceramic/3	Ceramic/3	Ceramic/3
Pump (RPM)	1450	1450	1450	1450	1450	1450	1450
Water temperature (water/steam) (°C)	90/150	90/150	90/150	90/150	90/150	90/150	90/150
Fuel consumption, ΔT=45°C (kg/h)	3.2	4.1	4.3	4.9	4.9	5.2	5.2
Fuel tank (l)	15	15	15	15	15	15	15
Dimensions L x W x H (mm)	1053 x 685 x 760	1053 x 685 x 760	1053 x 685 x 760	1053 x 685 x 760	1053 x 685 x 760	1053 x 685 x 760	1053 x 685 x 760
Weight (kg)	136	136	136	136	136	141	141
Power consumption (kW)	4	4	4	5.5	5.5	5.5	5.5
Voltage/phase/frequency/current (V/~/Hz/A)	230/1/50/9.9	400/3/50/9.9	400/3/50/11.8	400/3/50/12.5	400/3/50/12.9	400/3/50/14.3	400/3/50/14.7
El cable (m)	5	5	5	5	5	5	5
Automatic start/stop	●	●	●	●	●	●	●
Nozzle size	0450	0450	0450	0500	0500	0500	0500
STANDARD EQUIPMENT							
HP Hose (DN8)	101117763 [15 m]	301001100 [15 m]	301001100 [15 m]	1405569 [10 m]	301001100 [15 m]	1405569 [10 m]	301001100 [15 m]
Ergo 2000 gun	106403122	106403122	106403122	106403122	106403122	106403122	106403122
Ergo coupling	101119496	101119496	101119496	101119496	101119496	101119496	101119496
Water inlet coupling*	32541	32541	32541	32541	32541	32541	32541
Hose reel		301001688	301001688		301001688		301001688
Universal Plus lance without HP nozzle	106403033	106403033	106403033				
Tornado Plus lance without HP nozzle				106403010	106403010	106403010	106403010
Tornado Plus nozzle	101119740	101119740	101119740	101119741	101119741	101119741	101119741
ITEM NO.	107146608	107146600	107146601	107146602	107146611	107146614	107146615



The "Wet-End" makes life easier Frost-proofing, topping-up the Anti-Stone container, and external detergent transport makes it easy to refill or change detergents.

* Gardena coupling

NEPTUNE 5 FA

- The professional solution



The versatile NEPTUNE 5 FA series continues to combine low running costs, high performance, ease of use, low noise and great cleaning efficiency.

The award winning design is easy to use and service. The flow activated control system contributes to even more comfortable use of the machine and assures durability and reliability.

The EcoPower boiler system offers > 92% efficiency for significantly reduced fuel consumption and lower running cost.



NEPTUNE 5 FA / FAX

- Flow activated control system - Reduced running costs.
- NA5H pump with ceramic pistons.
- Easy to use control panel.
- Reduced air pollution.
- Brass cylinder head.
- Efficient motor cooling.
- Tough metal frame.
- High water flow pump.
- Efficient motor cooling.
- EcoPower boiler. Low fuel consumption with high heating performance > 92% efficiency.
- SilentPower. 1450 RPM, 4-pole motors = low sound level and extend lifetime of the pump.
- Quick Service concept reduces maintenance cost and service time by up to 25%.
- Hose reel and additional hose on FAX models.
- Ease of use; control panel, all controls on one place, diagnostic system, fuel indicator, pump oil warning and flexible detergent system.
- Ergo accessory system for additional user comfort.



With the NEPTUNE 4 FA and 5 FA, you can get your cleaning task done quicker and prolong the working life of your pressure washer, reducing your overall cleaning costs.

The NA5 wobble disc pump unit is not only robust and cost effective – it is also quiet, making cleaning more comfortable.

No compromise has been made on quality materials and lifetime.

TECHNICAL DATA	NEPTUNE 5-50 FA	NEPTUNE 5-50 FAX	NEPTUNE 5-61 FA	NEPTUNE 5-61 FAX
Pump pressure (bar/MPa)	190/19	190/19	210/21	210/21
Cleaning impact (kg/force)	5.0	5.0	6.1	6.1
Water flow Q _{max} /Q _{IEC} (l/h)	960/900	960/900	1110/1050	1110/1050
Max. inlet temperature (°C)	40	40	40	40
Pistons/number of pistons	Ceramic/3	Ceramic/3	Ceramic/3	Ceramic/3
Pump (RPM)	1450	1450	1450	1450
Water temperature (water/steam) (°C)	90/150	90/150	90/150	90/150
Fuel consumption, ΔT=45°C (kg/h)	4.9	4.9	5.8	5.8
Fuel tank (l)	35	35	35	35
Dimensions L x W x H (mm)	1190 x 702 x 987	1190 x 702 x 987	1190 x 702 x 987	1190 x 702 x 987
Weight (kg)	184	189	184	189
Power consumption (kW)	6	6	7.6	7.6
Voltage/phase/frequency/current (V/~/Hz/A)	400/3/50/12.5	400/3/50/12.9	400/3/50/16.8	400/3/50/17.3
Detergent tank (l)	A:15 + B:10	A:15 + B:10	A:15 + B:10	A:15 + B:10
El cable (m)	5	5	5	5
Automatic start/stop	●	●	●	●
Nozzle size	0500	0500	0550	0550
STANDARD EQUIPMENT				
HP Hose (DN8)	101405770 [10 m]	301001101 [20 m]	101405770 [10 m]	301001101 [20 m]
Ergo 2000 gun	106403122	106403122	106403122	106403122
Ergo coupling	101119496	101119496	101119496	101119496
Water inlet coupling*	61369	61369	61369	61369
Hose reel		301001131		301001131
Tornado Plus lance without HP nozzle	106403010	106403010	106403010	106403010
Tornado Plus nozzle	101119741	101119741	101119743	101119743
ITEM NO.	107146650	107146651	107146653	107146654

* Universal brass coupling

NEPTUNE 7 FA

- The solution for industrial tasks



NEPTUNE 7 FA / FAX2

- Flow activated control system
 - Reduced running costs.
- C3 pump with 4 ceramic pistons.
- Brass cylinder head.
- Easy to use control panel.
- EcoPower boiler. Low fuel consumption with high heating performance > 92% efficiency.
- SilentPower. 1450 RPM, 4-pole motors = low sound level and extend lifetime of the pump.
- Quick Service concept reduces maintenance cost and service time by up to 25%.
- No standby pressure in the hose, lance and spray gun adds to user comfort and safety.
- Leaks in equipment or piping will not cause the motor to start and stop as on pressure activated systems.
- No pressure on pump head.
- Hose reel (X2 models).
- Cable reel (X2 models).
- Ergo accessory system for additional user comfort.



The tough and robust NEPTUNE 7 FA series combines low running costs, ease of use, low noise and high cleaning efficiency. The most effective tool for heavy duty, industrial hot water cleaning in any sector. The NEPTUNE 7 FA series features low running and maintenance costs, robustness, durability and high cleaning efficiency. Heating costs are reduced with the award-winning EcoPower boiler system with > 92% heating efficiency. Sound level is reduced and lifetime extended with the famous C3 pump and 1450 RPM motor.

TECHNICAL DATA	NEPTUNE 7-63 FA	NEPTUNE 7-63 FAX2
Pump pressure (bar/MPa)	175/17.5	175/17.5
Cleaning impact (kg/force)	6.3	6.3
Water flow Q _{max} /Q _{IEC} (l/h)	1260/1170	1260/1170
Max. inlet temperature (°C)	40	40
Pistons/number of pistons	Ceramic/4	Ceramic/4
Pump (RPM)	1450	1450
Water temperature (water/steam) (°C)	90/150	90/150
Fuel consumption, ΔT=45°C (kg/h)	5.6	5.6
Fuel tank (l)	35	35
Dimensions L x W x H (mm)	1190 x 702 x 987	1190 x 702 x 987
Weight (kg)	217	224
Power consumption (kW)	8.3	8.3
Voltage/phase/frequency/current (V/~/Hz/A)	400/3/50/15	400/3/50/15
Detergent tank (l)	A:15 + B:10	A:15 + B:10
El cable (m)	5	10
Automatic start/stop	●	●
Nozzle size	0680	0680
STANDARD EQUIPMENT		
HP Hose (DN10)	6101766 [10 m]	1402072 [20 m]
Ergo 2000 gun	106403122	106403122
Ergo coupling	101119496	101119496
Water inlet coupling*	61369	61369
Hose reel		301001130
Tornado Plus lance without HP nozzle	106403010	106403010
Tornado Plus nozzle	101119747	101119747
ITEM NO.	301001731	107146212

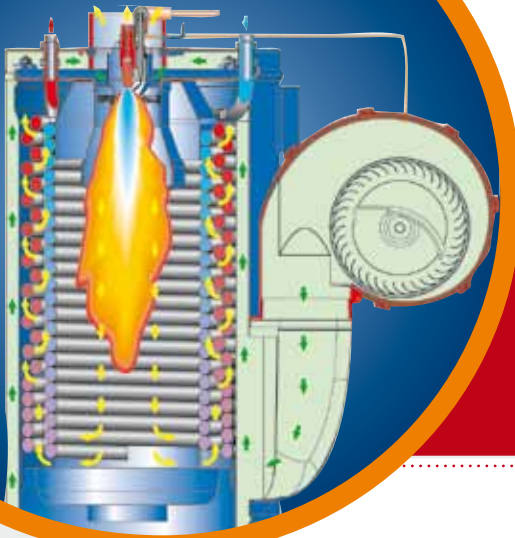


The Chassis: Steel frame and corrosion-proof.
The Control Systems: Monitor system performance and other critical machine functions.
The Heating System: Efficient combustion and Duo-Motor system to protect the fuel, pump and eliminate 3-phase rotation problems.
The Pump system: NEPTUNE 7 FA uses the C3 axial-piston pump... the recognised standard for Industrial pump. Durability, full-ceramic pistons, high performance seals and 1450 RPM motors.

* Universal brass coupling

NEPTUNE 8

- For heavy duty use



The tough and robust NEPTUNE 8 series combines low running costs, ease of use, low noise and high cleaning efficiency.

The most effective tool for heavy duty uses requiring high water flow.

The NEPTUNE 8 series features low running and maintenance costs, robustness, durability and high cleaning efficiency.

Heating costs are reduced with the award-winning EcoPower boiler system with > 92% heating efficiency.

The pump offers high water flow for tough applications in industry and construction.



NEPTUNE 8-103

- Use by 1 or 2 users at same time.
- High water flow pump.
- Efficient motor cooling.
- EcoPower boiler. Low fuel consumption with high heating performance > 92% efficiency.
- SilentPower. 1450 RPM, 4-pole motors = low sound level and extended lifetime of the pump.
- Quick Service concept reduces maintenance cost and service time by up to 25%.
- Ease of use; control panel, all controls on one place, diagnostic system, fuel indicator, pump oil warning and flexible detergent system.
- Ergo accessory system for additional user comfort.



The EasyClean Boiler reduces the difficult and time consuming task of cleaning the coil, to the level of "ordinary maintenance". In some places, legislation requires that the Boiler is completely serviced annually, even if there are no apparent faults. The EasyClean coil can be removed and left on the floor, ready for cleaning, in less than 6 minutes... by one technician, working alone.

TECHNICAL DATA	NEPTUNE 8-103
Pump pressure (bar/MPa)	180/18
Cleaning impact (kg/force)	10.3
Water flow Q _{max} /Q _{IEC} (l/h)	2000/1950
Max. inlet temperature (°C)	40
Pistons/number of pistons	Ceramic/3
Pump (RPM)	1450
Water temperature (water/steam) (°C)	70/150
Fuel consumption, ΔT=45°C (kg/h)	9.4
Fuel tank (l)	35
Dimensions L x W x H (mm)	1190 x 702 x 987
Weight (kg)	230
Power consumption (kW)	12
Voltage/phase/frequency/current (V/~/Hz/A)	400/3/50/21
Detergent tank (l)	A:15 + B:10
El cable (m)	5
Automatic start/stop	●
Nozzle size	1200
STANDARD EQUIPMENT	
HP Hose (DN10)	6101766 [10 m]
Ergo 3000 gun w/swivel lock	106402190
Ergo coupling	101119496
Water inlet coupling*	61369
Tornado Plus lance without HP nozzle	106403010
Tornado Plus nozzle	101119758
ITEM NO.	301001786

NEPTUNE E

- Electrical heated hot water unit



NEPTUNE E 24 / E 12

- Pollution free electrical heating.
- Heating tank for precise control of temperature and rapid heating of water.
- Automatic start/stop extends pump and motor lifetime.
- Ceramic pistons for resistance to preheated water and longer lifetime.
- WDK dual detergent injection system: self-cleaning valve allows you to select detergent A or B, and adjust concentration. Continual rinsing of the system prevents blockage or mixing of detergents.
- SilentPower. 1450 RPM, 4-pole motors = low sound level and extend lifetime of the pump.
- Quick Service concept reduces maintenance costs and service time by up to 25%.
- Easy to use control panel, all controls on one place.
- Ergo accessory system for additional user comfort.



The ergonomic and easy to use NEPTUNE design is now adapted to an electrical heated hot water unit. Ideal for use in areas where exhaust gases must be avoided, the NEPTUNE E offers pollution free hot water cleaning.

TECHNICAL DATA	NEPTUNE E 12	NEPTUNE E 24
Pump pressure (bar/MPa)	150/15	150/15
Cleaning impact (kg/force)	3.6	3.6
Water flow Q _{max} /Q _{IEC} (l/h)	750/720	750/720
Max. inlet temperature (°C)	70	70
Pistons/number of pistons	Ceramic/3	Ceramic/3
Pump (RPM)	1450	1450
Max. temperature (°C)	30-80	30-80
Dimensions L x W x H (mm)	1190 x 702 x 987	1190 x 702 x 987
Weight (kg)	131	131
Voltage/phase/frequency/current (V~/Hz/A)	400/3/50/27	400/3/50/42
Detergent tank (l)	A:35 + B:10	A:35 + B:10
El cable (m)	5	5
Automatic start/stop	●	●
Nozzle size	0435	0435
STANDARD EQUIPMENT		
HP Hose (DN8, 10m)	101405770	101405770
Ergo 2000 gun	106403122	106403122
Ergo coupling	101119496	101119496
Water inlet coupling*	61369	61369
Universal Plus lance without HP nozzle	106403035	106403035
Tornado Plus nozzle	101119739	101119739
ITEM NO.	301002020	301002021



The NEPTUNE E is thus adapted to food industry or hazardous areas. The NEPTUNE E benefits from many of the same features as the NEPTUNE 5, including WDK dual chemical system, robust steel chassis and frame.

* Universal brass coupling

ACCESSORIES



The accessories, the application, the solutions, the flexibility

The Ergo System optimises ergonomics, user-friendliness and adaptability of the pressure washer for professional users.

Intensive use of a pressure washer can be tiring for hands, arms and shoulders. So the parts of the pressure washer handled most - the spray gun, lance and couplings, were studied and engineered to reduce operator fatigue and thereby increase operating efficiency.

Various accessories and attachments can be used to optimise the pressure washer for a specific cleaning task... and with the Ergo system described on the next page, it is possible to change accessories in seconds, of course without tools.

Simple Short Lance & Short Double Lance

These lances allow you to control the water flow and pressure when working close to the dirt.



Water Sandblaster

These accessories makes it easy to remove rust, scale and even concrete build-up from surfaces. It can also be used for cleaning or to prepare for painting.



Armex Softblasting

The Armex Softblasting kit makes it easy to remove paint, such as graffiti, without damaging the surface. It can also be applied when cleaning smoke damage or other dirt before repainting walls.



PowerScrub

The PowerScrub is an easy and fast way to clean small or large horizontal or vertical surfaces. Available in 30 cm, 40 cm or 50 cm diameter.



Rotary Brush

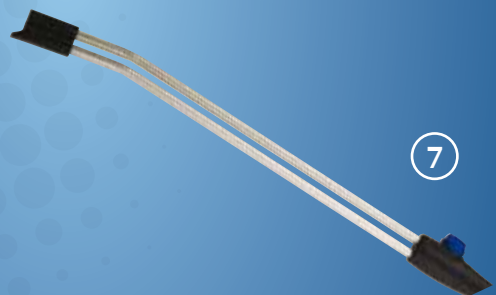
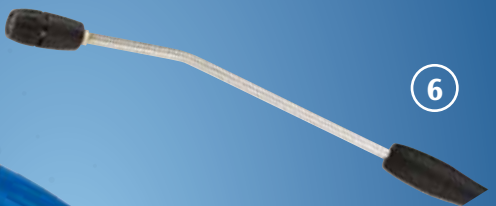
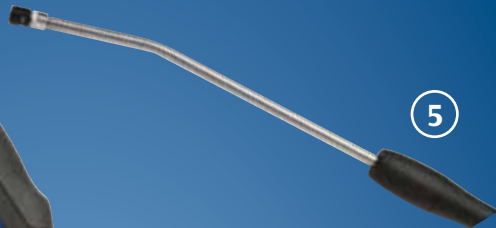
The Rotary Brush is driven by the water of your pressure washer, which includes a control for rotation speed and control for pressure and detergent (if an external injector is used). This brush is ideal for cleaning bodywork, windows, etc.



Washing Brush

This brush is ideal for washing trucks, buses and camping trailers. It also includes control for detergent (if an external injector is used).





- 1) **Ergo 2000 spray gun**
 - Unique, ergonomic design
 - Low activation and holding forces
 - Reduced working strain
 - Accessory quick coupling system
 - VarioPress version available (is shown on picture)
- 2) **Ergo 3000 spray gun**
 - Low activation and holding force on trigger
 - 360° flexo swivel for hose with locking device adding comfort in any working position
 - Swivel couplings on hose avoid hose drilling
 - Quick bayonet coupling system for easy connection of accessories
 - VarioPress version available (is shown on picture)
- 3) **Tornado Plus nozzle**
 - Patented nozzle construction
 - 75% more efficient through high level of water concentration
- 4) **Ergo 3000 high pressure couplings**
 - Quick and easy connection of hose and machine
 - Protective cover shield against heat transfer
 - Security against hose removal when hose is under pressure
- 5) **Universal Plus lance**
 - Lightweight and simple high pressure lance
 - Stainless steel piping
 - Ergonomic casing for optimal holding positions
 - Available in different versions; curved and straight
- 6) **FlexoPower Plus lance**
 - Lightweight and simple lance
 - Pressure regulation at nozzle head allowing work with low pressure detergent and rinsing
 - Stainless steel piping
 - Ergonomic casing for optimal holding positions
 - Available in different lengths
- 7) **Tornado Plus lance**
 - Robust stainless steel double pipe lance
 - Pressure regulation at lance
 - Separate low pressure nozzle with optimal rinsing effect that gives possibility for using low pressure detergent
 - Available in different lengths
- 8) **Sidebar**
 - Optional accessory for additional comfort in working posture
 - SoftGrip - Flexible solution: Adaptable to left or right handed use, long or short reaches

ErgoSystem
Applied Ergonomics

The hot water high pressure range



The NEPTUNE line – constant hot water innovation

Time and time again, the NEPTUNE line has shown Nilfisk-ALTO's commitment to innovation, productivity and handling. The NEPTUNE line was the first hot water range to implement an EcoPower boiler system with higher efficiency, reduced emissions and fuel costs. A system that has since been copied.

The NEPTUNE 1 and 2 entry level compact hot water units combine ground breaking design with efficient performance, low emission and reduced running costs. Ideal for craftsmen and small garages, the vertical design gives a reduced footprint and makes transport and storage easier. The EcoPower boiler continues to give fuel savings in comparison to many other models on the market. Whether it is a single or a three phase machine, the NEPTUNE 1 and 2 offer great cleaning efficiency.

The NEPTUNE 4 FA and 5 FA are both powerful and robust medium range units. Whether the need is for a more compact machine such as the NEPTUNE 4 FA, or a more powerful and feature-packed NEPTUNE 5 FA, optimal handling, cleaning efficiency, low emission, and low running costs are still part of the package. And now the NEPTUNE 4 FA and 5 FA are equipped with the new NA5H pump, slow running motor and unique flow activated unloader system for even more improved user comfort.

The NEPTUNE 7 FA combines award-winning design, 4 piston pump technology and a hugely powerful EcoPower boiler system to offer some of the best performances on the market. Now equipped with the unique flow unloader system it is an ideal unit for heavy duty industrial use.

In addition to these core models, Nilfisk-ALTO also offers the high flow NEPTUNE 8, and the electrically heated NEPTUNE E models – a full range, whatever the application.



The Nilfisk-ALTO brand is owned by Nilfisk-Advance A/S, one of the leading professional cleaning equipment companies in the world, with a turn-over of Euro 789 million and 4,900 employees.

Our headquarters is in Denmark and we have sales companies in all main European countries, North America and Asia. Our manufacturing facilities are in Hungary, China, Italy, the USA, Singapore, Denmark and Germany.

We supply quality high pressure washers, vacuum cleaners and floor care equipment to agriculture, automotive and industrial companies, cleaning contractors and private consumers.

With the Nilfisk-ALTO brand we focus on innovation and growth. We believe in developing and maintaining long lasting relationships with our customers, suppliers and employees.

No claims can be made on the basis of information or illustrations contained in this catalogue. Subject to alteration of technical data, design and equipment.

Distributed by:

Nilfisk-ALTO
www.nilfisk-alto.com

**Nilfisk
ALTO**
Why Compromise